

Designed by HeliBEST

MC6500GOPRO

Small Multi-purpose 2 Axis aerial video Camera Gimbal

User Manual



非常重要：在組裝和使用 MC6500GOPRO 前請您仔細通讀本手冊。

IMPORTANT: Please read through the entire manual before attempting to assemble or use the camera gimbal.

注意事項 CAUTIONS

為了使本產品發揮最佳性能，請您務必在組裝前通讀說明書，並按照說明書步驟完成組裝。您需要使用的額外工具包括：2.0mm 內六角螺絲刀、小型十字或一字螺絲刀、小夾鉗；您還需要自備高品質瞬間膠水（502 或 495）。

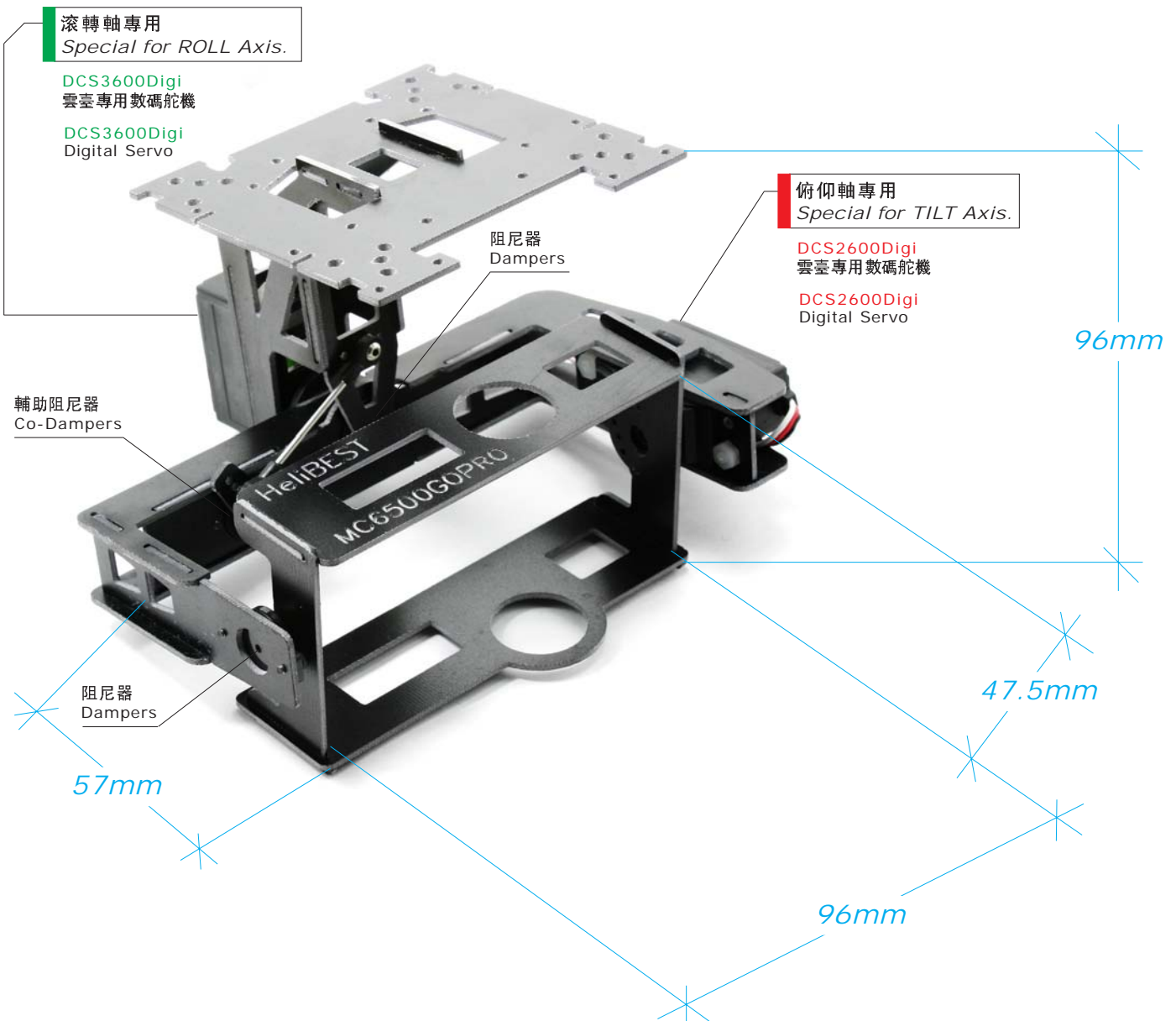
注意：本產品組件大部分需用瞬間膠水粘接，操作膠水時應特別留意以下事項：1. 適量用膠；2. 注意防護（勿使膠水入口眼，勿使膠水粘住手指）；3. 還未干透的余膠可用吸水紙立即去除，以保持美觀度；4. 從待粘接零件的后背部塗膠更利于美觀。使用高品質瞬間膠，可快速粘接，結構強度完全可滿足應用要求，不必擔心是否牢固的問題，敬請放心使用！

To obtain the best performance of this product, please read through the manual carefully and assemble the parts according to the detailed instructions. Additional tools you need to use are as follows: 2.0mm allen driver, small slotted screwdriver or small phillips screwdriver, small clamp and high quality instant adhesive.

Note: Most parts of this camera gimbal need to be adhered by instant adhesive, so please pay attention to the following points when you using it:

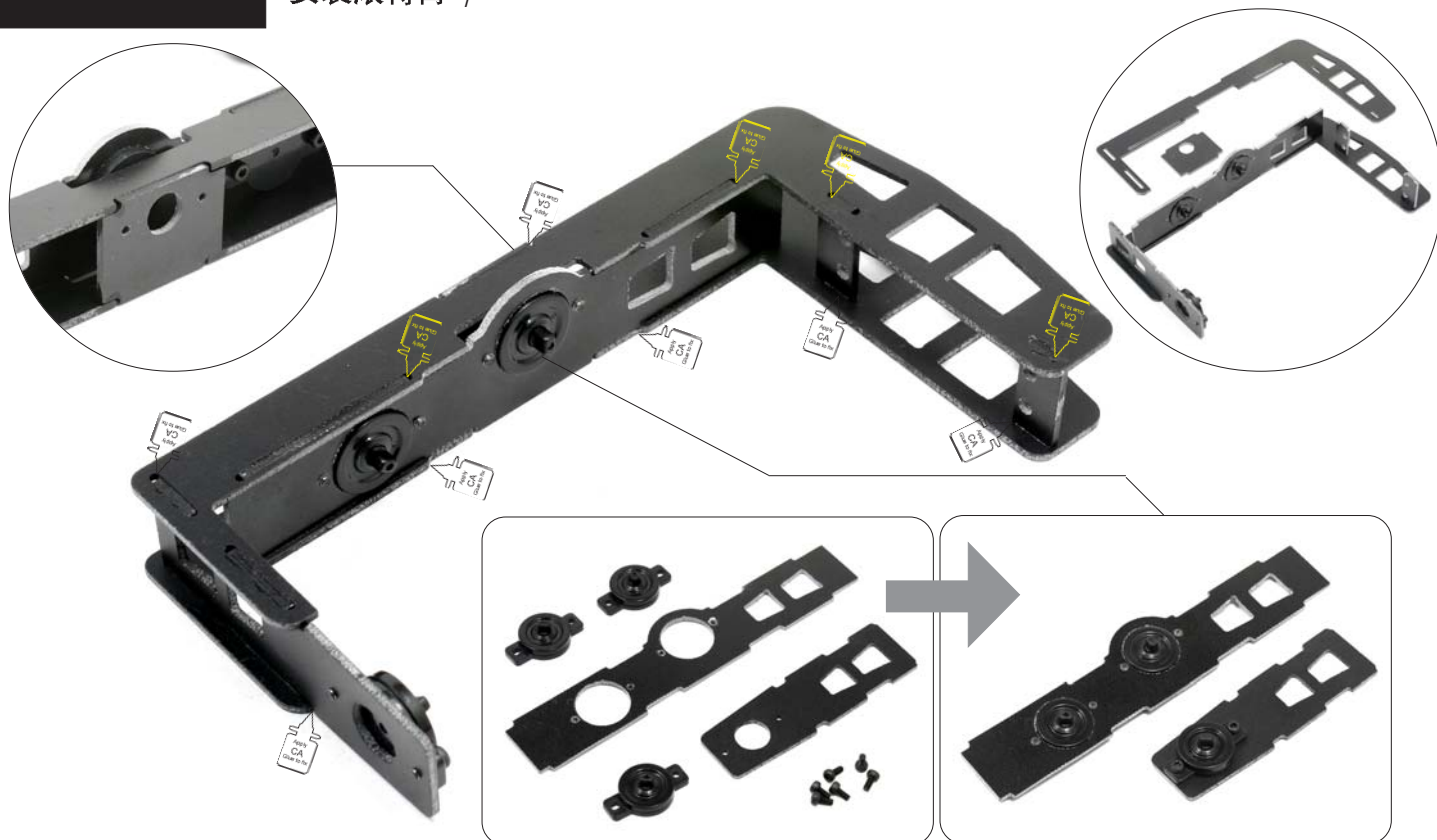
1. proper amount of instant adhesive (Neither too much nor too little);
 2. Protect yourself (Don't let the adhesive get into your mouth or eyes, or between your fingers);
 3. Absorb the extra undried adhesive by absorbent paper to keep clean appearance of this gimbal;
 4. Apply the adhesive on the back of the parts which could help keep the appearance neat and clean;
- The parts can be adhered quickly by applying high quality instant adhesive. And the structural strength could fully meet the requirements in use.

尺寸說明 Dimension



STEP 1

安裝滾轉臂 | Install the ROLL Arm

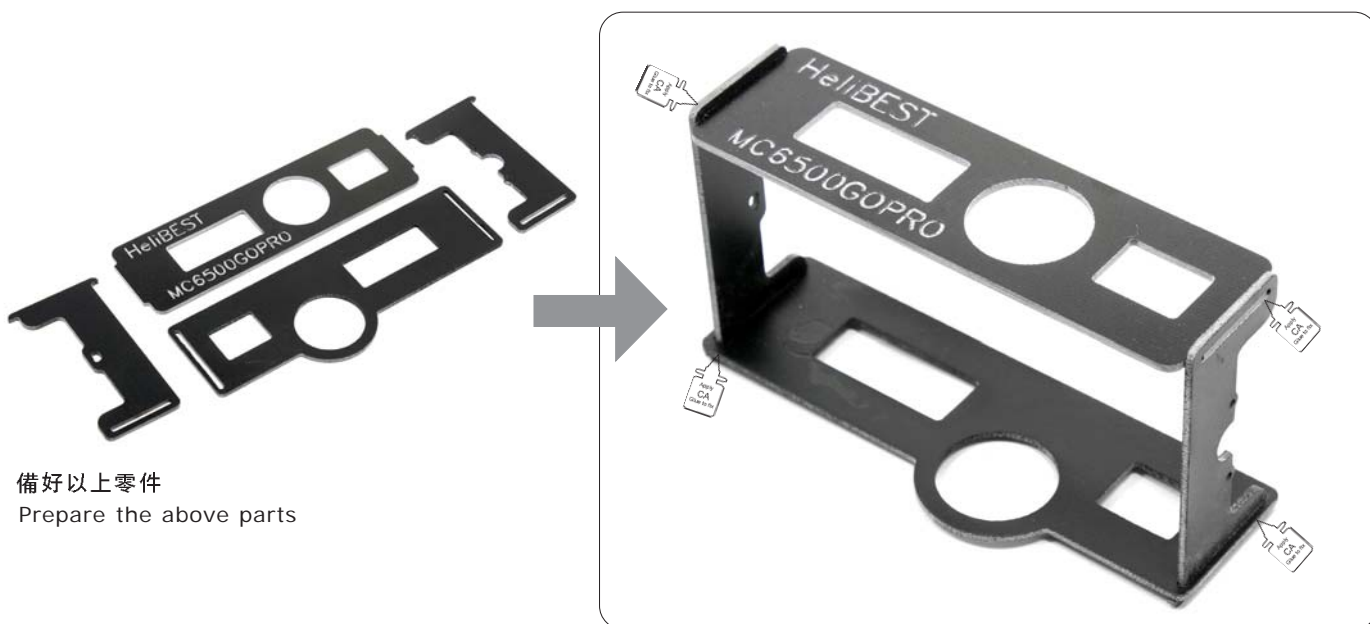


1. 注意控制螺絲鎖緊的力道，過緊易破損
2. 注意阻尼器的安裝方向（請參考上述照片）
3. 不可以用較大的力扭動或壓迫阻尼器的輸出軸，否則會造成損壞
4. 不可將膠水滴入阻尼器的輸出軸內，否則會造成損壞

1. Using moderate force, too tight may break the parts
2. Pay attention to the installation direction of the damper as seen above
3. Do not apply too much force when rotate or press the damper output shaft rough, it may break the parts
4. Do not drip the adhesive into the damper output shaft, it may break the parts

STEP 2

安裝相機固定框 | Install the Camera Mount



備好以上零件
Prepare the above parts

STEP 3

安裝滾轉驅動臂 | Install the rolling actuating arm



備好以上零件
Prepare the above parts



1. 注意零件的安裝方向
2. 把膠塗在接縫背面更利于外形美觀
3. 不要讓膠流到手指上了，以免在產品上留下指紋
4. 需等膠干透后才可放手，以免零件翹起，造成粘接不良

1. Pay attention to the installation direction of the parts
2. Apply the adhesive on the back of the joints could keep the appearance neat and clean
3. Do not apply the adhesive on the fingers, to avoid leaving the finger prints on the parts
4. Do not loose your hand until the adhesive dry, to make sure that all the parts are adhered perfectly

STEP 4

安裝舵機 | Install the digital servo to camera gimbal



俯仰軸專用
Special for TILT Axis.

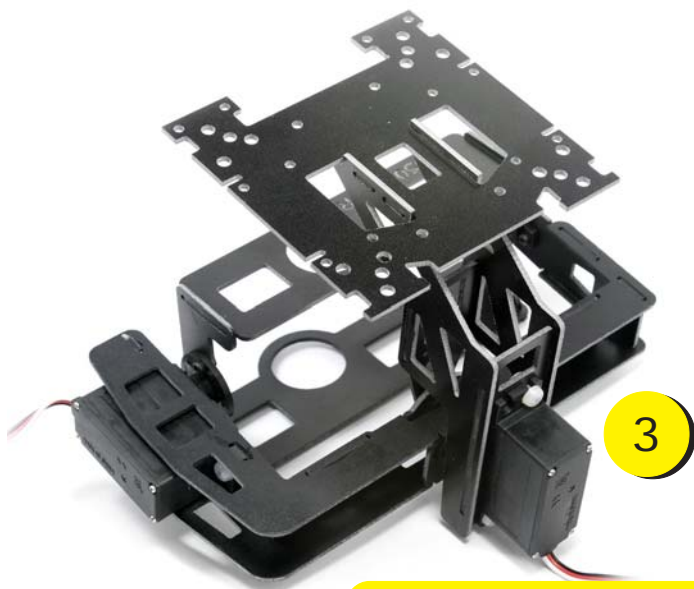
DCS2600Digi
Digital Servo



安裝前請先將舵機連接到接收機俯仰通道上(對於Futaba遙控器，俯仰通道是2號通道)，確認舵機的最大角度和最小角度(運行範圍)是否符合實際需求的角度。

3

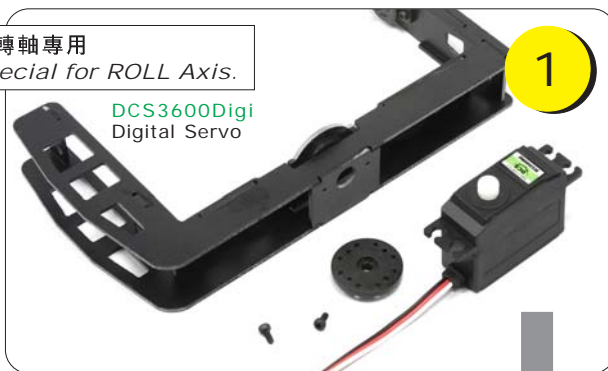
Please connect the servo to receiver ELE Channel (The CH2 on Futaba is ELE channel) before link the camera mount to the servo axis, and confirm the appropriate maximum angle and minimum angle (operating range) of the servo.



滾轉軸專用
Special for ROLL Axis.

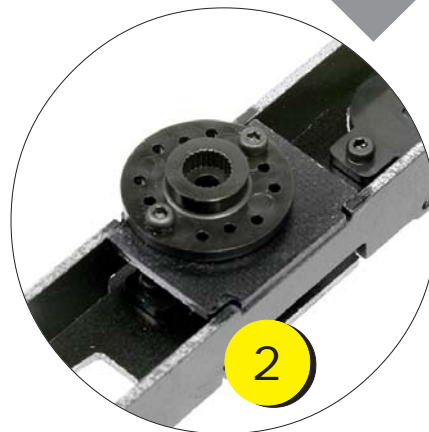
DCS3600Digi
Digital Servo

1



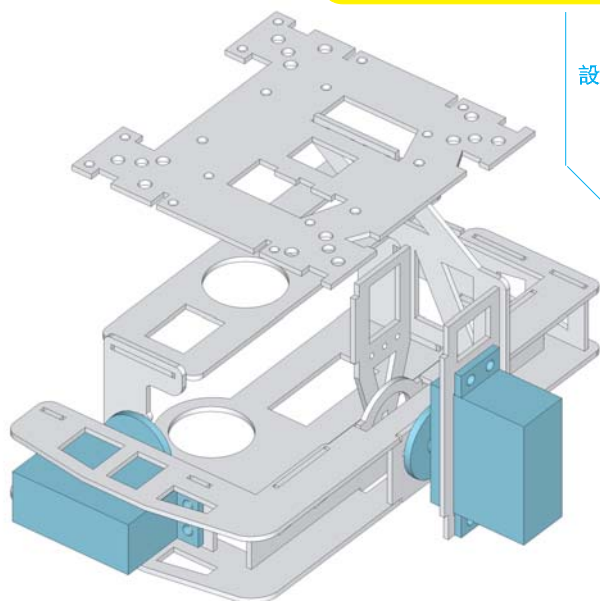
請先設定好舵機中立點后再安裝舵機。

設定方法



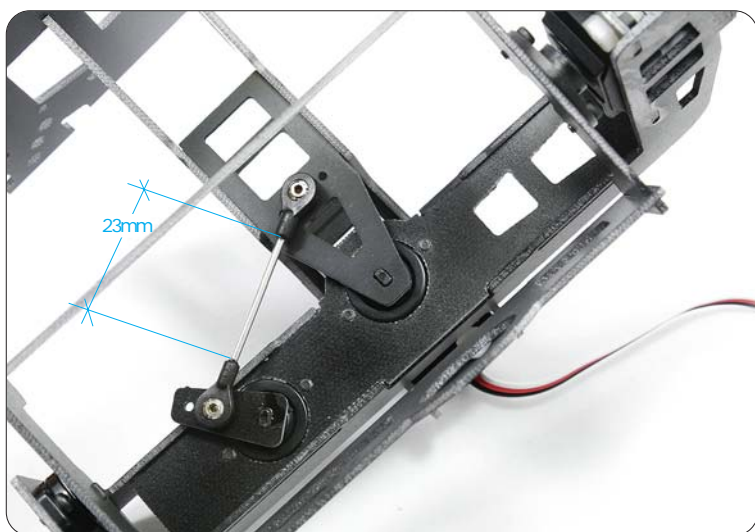
安裝前請先將舵機連接到接收機滾轉通道上(對於 Futaba 遙控器, 滾轉通道是 1 號通道), 確認舵機的中立點, 并保持與滾轉臂垂直的角度進行安裝。

Please connect the servo to receiver's AIL Channel (for Futaba is CH1) before link the camera mount to the servo axis, confirm the neutrality point of the servo, then install while remaining the vertical angle towards the roll arm.

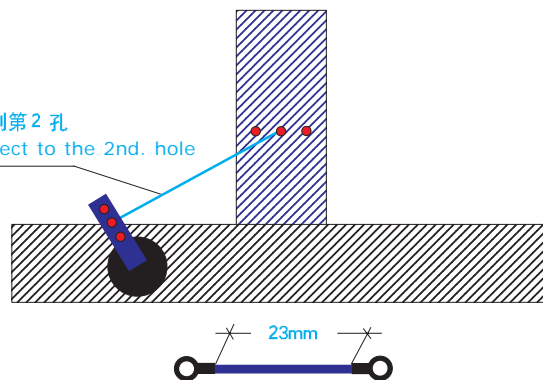


STEP 5

安裝穩定杆 | Install the stabilizer bar



連接到第 2 孔
Connect to the 2nd. hole



穩定杆可以使滾轉臂運轉更穩定

Stabilizer bar can make the roll arm more stable in operation